

Daily cleaning

Schaerer Coffee Art Plus / CS

 **schaerer**




Refer to the safety instructions and to the chapter **Cleaning** inside the user manual!



Never reach into the machine or under the beverage outlets during the automatic cleaning!



- ▶ Press and hold the [] button (± 4 seconds).

The display shows:

cleaning program
remove container

- ▶ Pull out the grounds container **within 5 seconds** and clean it.
- ▶ Clean the brew area with the brush.
- ▶ Place the grounds container back.

The display shows:


cleaning program
insert tablet



With DECAF cover detection:

- ▶ Open DECAF cover.
- ▶ Insert one cleaning tablet **within 15 seconds**.
- ▶ Close DECAF cover.

Without DECAF cover detection:

- ▶ Insert one cleaning tablet.
- ▶ Press the [] button.

Machines with steam; with activated steam boiler rinsing:

- ▶ Continue with step **3**.


Machines without steam; with deactivated steam boiler rinsing:

- ▶ Continue with step **4**.



The display shows:

cleaning program
hot water rinsing

- ▶ Place a container under the steam wand.
- ▶ Press the [] button to start the rinsing.



Attention Hot steam!



If no milk products were dispensed:



Cleaning is running! (duration: refer to display)

- ▶ Continue with step **6** after the cleaning.

The display shows:

cleaning program
cleaning agent

- ▶ Remove and clean the milk container.
- ▶ Fill the cleaning agent into the cleaning container.

Dosage:


Daypure: 100 ml
Water: added by the machine!



Cleaning is running! (duration: refer to display)

Wait, until the display shows:

remove cleaning
agent


- ▶ Remove and rinse the cleaning container.
- ▶ Confirm using the [] button.




The display shows:

on milk system off

To release milk system:

- ▶ Press the [] button.

To block milk system:

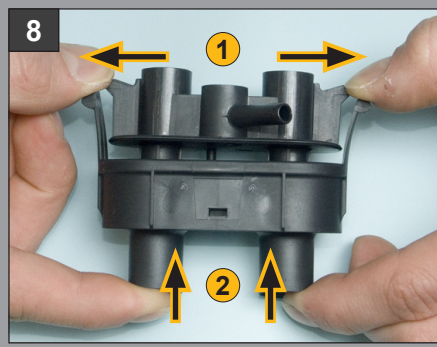
- ▶ Press the [] button.



The display shows:

select product
12:00 01.02.2010

- ▶ Release the foamer head from the holder (press the button).
- ▶ Pull off the tubes from the foamer head.



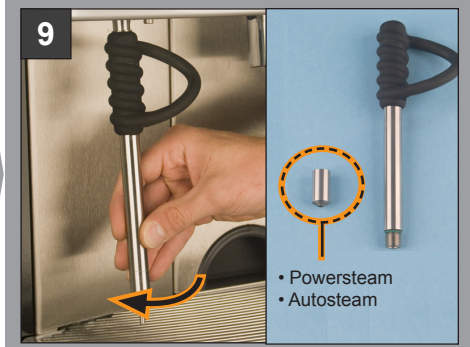
- ▶ Dismantle the foamer head and wash it under warm, running water.
- ▶ Remove residues with a brush.
- ▶ Mount the foamer head and place it back in.
- ▶ Place the tubes back onto the foamer head (**don't forget the spring!**).

Machines without steam:

- ▶ Continue with step **11**.

Machines with steam:

- ▶ Continue with step **9**.



- ▶ Remove the steam wand.
- ▶ Dismantle the steam outlet and insert it in a container with cleaning solution.

Dosage:

Daypure: 50 ml
Water: 500 ml



Insert the steam outlet parts for ± 10 minutes into the solution!



Only with Autosteam:

- ▶ Clean the temperature probe with a damp tissue.
- ▶ Remove the steam outlet parts from the cleaning solution and rinse them under warm, running water.
- ▶ Mount the steam outlet together and place it back onto the machine.
- ▶ Press the [**Steam**] button ± 5 times shortly to remove residues from the steam outlet.



- ▶ Remove and wash drip grid under warm, running water.
- ▶ Clean drip tray with a damp tissue.
- ▶ Place the drip grid back in.
- ▶ Clean external surfaces with a damp tissue.



Do not use any abrasives!



Weekly cleaning:

- ▶ Carry out steps **1** to **11** with the weekly cleaning agent.

Dosage:

Weekpure: 100 ml
Water: added by the machine!



Follow hygiene regulations according to HACCP!

Extract from HACCP:

- ▶ Never top up milk container. Always throw leftovers away.
- ▶ Always clean the milk container before filling it with fresh milk.
- ▶ Fill up with fresh milk, chilled to 3 – 5 °C, just before restarting the machine.
- ▶ Use pasteurized or ultra high temperature treated (UHT) milk! Do not use raw milk! The milk must be homogenised!
- ▶ If equipped, the refrigerator / cooling unit (optional) must be cleaned at least once a week!